

Product data sheet

A20/GFP stable cell line

Catalog Number: CL-1654

Storage: Liquid nitrogen

Components: 1 vial contains $\sim 2 \times 10^6$ cells in Cell freezing medium

Product description

A20/GFP cells are derived from the mouse B lymphocyte cell line A20 by stably integration of a constitutive GFP stably expression construct. A20 cells were derived from a spontaneously arising reticulum cell sarcoma from an aging BALB/c mouse. A20 cells are highly responsive to immunomodulatory antibodies. A20/GFP cell line is an attractive model for use in immunotherapy drug development.

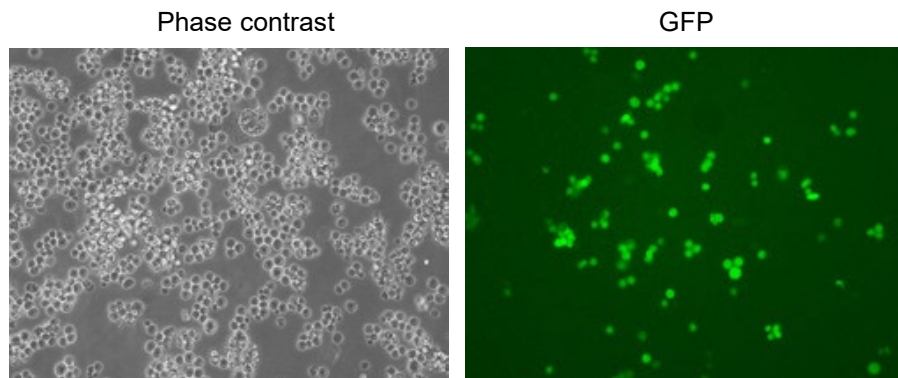


Figure 1. GFP expression in A20/GFP stable cell line.

Cell line description

Organism: *Mus musculus* (mouse)

Cell Type: B lymphocyte

Morphology: lymphoblast

Culture Properties: Suspension

Disease: Sarcoma; Reticulum Cell

Biosafety Level: 2

Medium

1. Complete culture medium: RPMI-1640, 20% fetal bovine serum (FBS)

2 µg/mL of puromycin may be added to the culture medium. **Puromycin should not be added until a culture has been well established from the thawed cells.**

2. Freeze medium: Fetal bovine serum (FBS), 6% DMSO

Culture procedure

Thawing of frozen cells

1. Thaw the frozen cryovial by gentle agitation in a 37 °C water bath in 1-2 minutes.
2. Remove the cryovial from the water bath as soon as the contents are thawed and decontaminate by wiping with 70% ethanol.
3. Transfer the thawed cell suspension to a centrifuge tube containing 10 ml of Complete culture medium, centrifuge at 125 g for 5 to 10 minutes.
4. Remove the medium by aspiration, resuspend the cells with 2 ml of the Complete culture medium by gently pipetting up and down.
5. Transfer the cells to a T-25 suspension cell culture flask.
6. Place the cells in a 37°C incubator with 5% CO₂.

Sub-culturing

Cultures can be maintained by the addition of fresh medium. Alternatively, cultures can be established by centrifugation with subsequent resuspension at 2×10^5 viable cells/ml. Do not allow the cell density to exceed 1×10^6 cells/ml.

Renew or add fresh medium every 2-3 days.