

## Product data sheet

DU145/RFP stable cell line

Catalog Number CL-1125

Storage: Liquid nitrogen

Components: 1 vial contains  $\sim 2 \times 10^6$  cells in Cell freezing medium

### Product description

DU145/RFP cells are derived from the human prostate cancer cell line DU145 by stably integration of a constitutive turboRFP expression construct. DU145 cells have been widely used in cancer research and drug development. DU145/RFP cells express turboRFP under the control of the CMV promoter, can be used for *in vitro* assays and *in vivo* imaging.

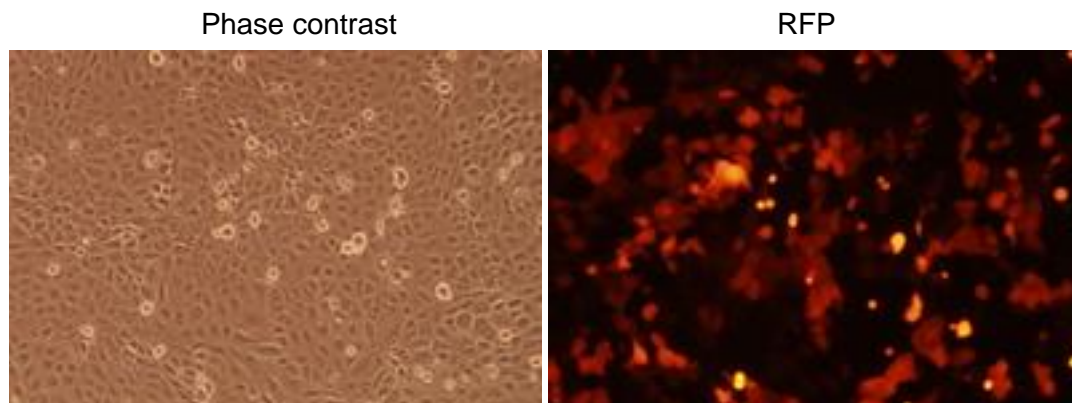


Figure 1. RFP expression in DU145/RFP stable cell line

### Cell line description

Organism: Homo sapiens (human)

Tissue: Prostate

Morphology: Epithelial

Culture Properties: Adherent

Disease: Carcinoma

Biosafety Level: 2

### Medium

1. Complete culture medium: RPMI-1640, 10% fetal bovine serum (FBS)

3 µg/mL of puromycin may be added to the culture medium. Puromycin should not be added until a culture has been well established from the thawed cells.

2. Freeze medium: Fetal bovine serum (FBS), 6% DMSO

## **Culture procedure**

### Thawing of frozen cells

1. Thaw the frozen cryovial by gentle agitation in a 37 °C water bath in 1-2 minutes.
2. Remove the cryovial from the water bath as soon as the contents are thawed, and decontaminate by wiping with 70% ethanol.
3. Transfer the thawed cell suspension to a centrifuge tube containing 10 ml of Complete culture medium, centrifuge at 500 g for 5 minutes.
4. Remove the medium by aspiration, resuspend the cells with 10 ml of the Complete culture medium by gently pipetting up and down.
5. Transfer the cells to a 10 cm cell culture dish.
6. Place the cells in a 37°C incubator with 5% CO<sub>2</sub>.

### Sub-culturing

Volumes are given for a 10 cm cell culture dish. Increase or decrease the amount of dissociation medium needed proportionally.

1. Remove the medium by aspiration.
2. Briefly rinse the cell layer with 1xDPBS to remove all traces of serum that contains trypsin inhibitor.
3. Add 1 ml of Trypsin-EDTA (0.25%) solution to the dish and observe cells under an inverted microscope until cell layer is dispersed.
4. Add 4 ml of complete growth medium and aspirate cells by gently pipetting.
5. Add appropriate aliquots of the cell suspension to new culture vessels. Incubate cultures at 37°C with 5% CO<sub>2</sub>.